

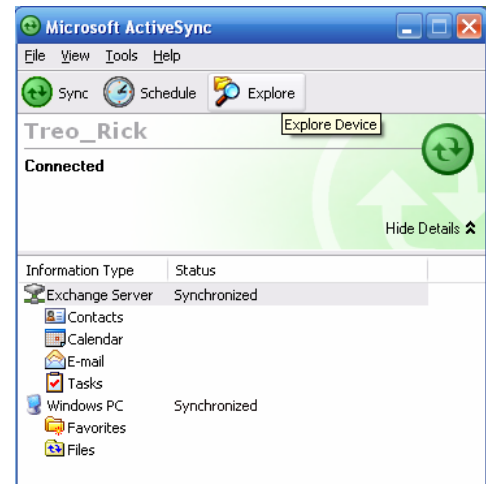
---

# WEATHERPANEL TRAFFIC IMAGE TUTORIAL

BY STORYR

---

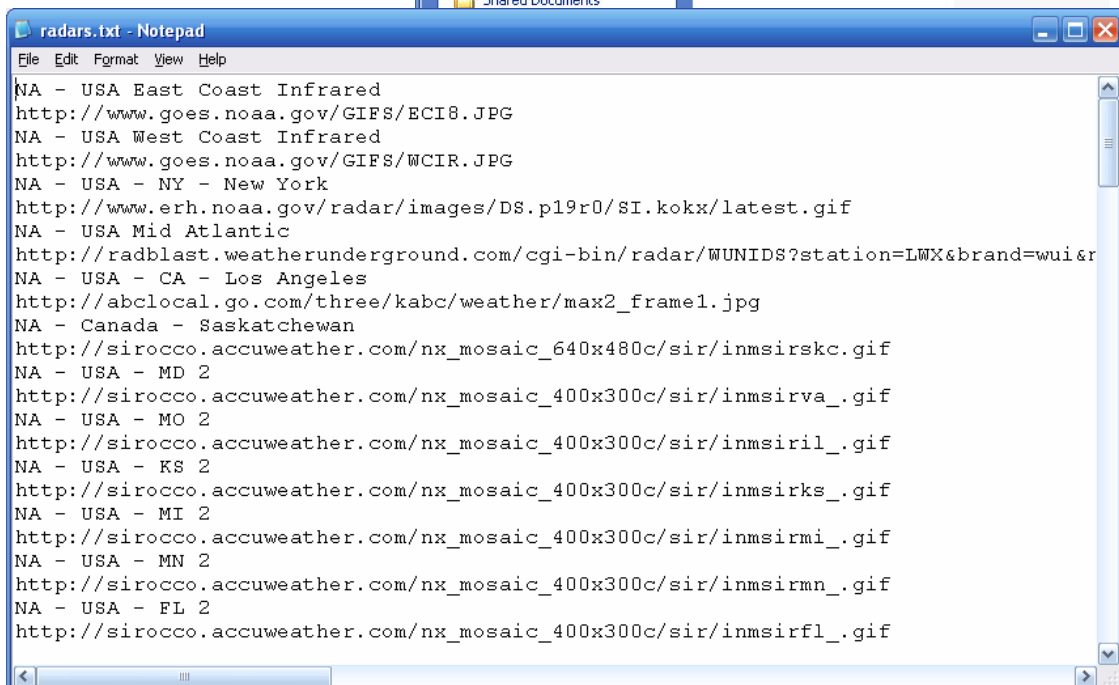
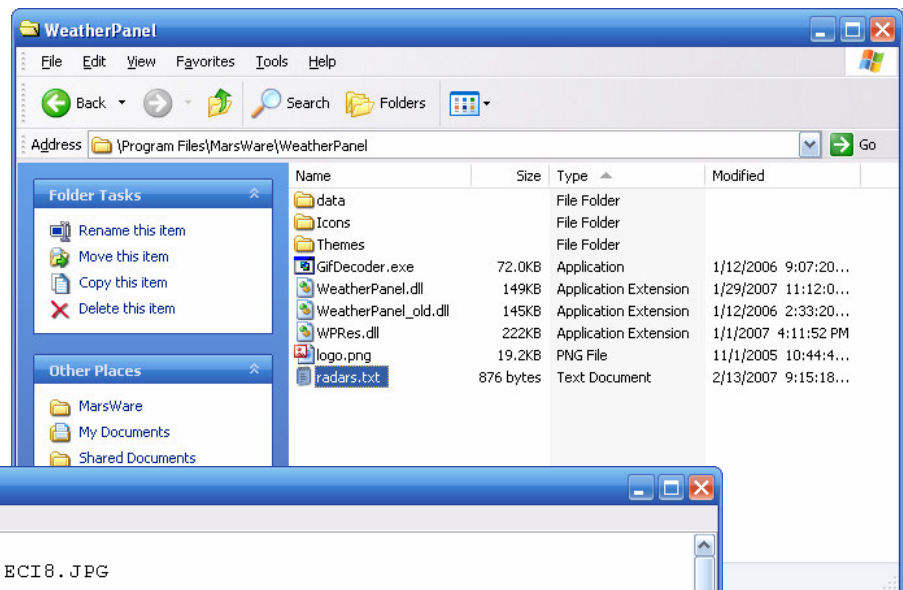
1. Dock your device
2. From **ActiveSync**, click the *Explore* button. A Windows Explorer window will open showing the files on your device.



3. In Windows Explorer, navigate to the WeatherPanel installation folder. It will contain a file named **radars.txt**.

Drag this file to your PC desktop and open it with Notepad.

It will look something like this:



# WEATHERPANEL TRAFFIC IMAGE TUTORIAL

BY STORYR

4. Next, find some traffic cameras. Try googling in your city or state:

The image is a collage of three screenshots from a Windows Internet Explorer browser window, illustrating the steps to find traffic cameras.

The top screenshot shows the Google homepage with the search bar containing "traffic seattle". The search results are displayed below the Google logo.

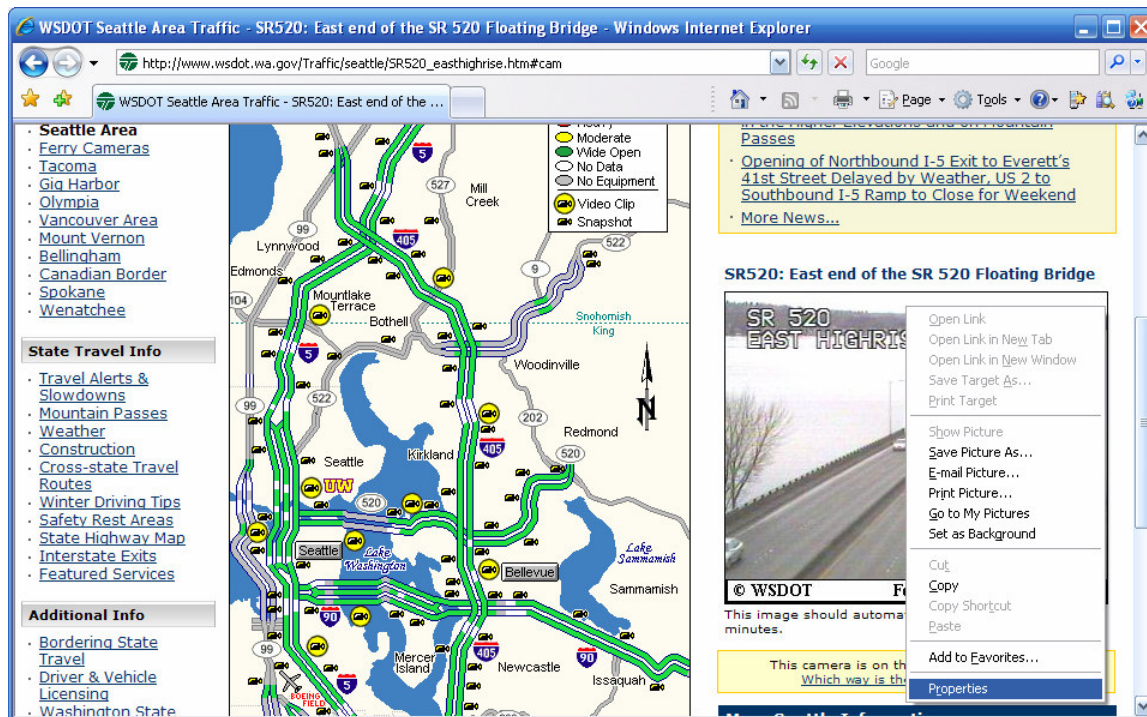
The middle screenshot shows the search results for "traffic seattle". The results include a link to "WSDOT Seattle Area Traffic - I-5: NE 45th St" and a "Sponsored Links" section with "Get Live Traffic Info" and "Seattle Traffic".

The bottom screenshot shows the WSDOT Seattle Area Traffic page. It features a map of the Seattle area with traffic conditions indicated by colored lines (green for moderate, yellow for wide open, red for no data). The map includes labels for various locations like Lynnwood, Edmonds, Mountlake Terrace, Bothell, Snohomish, King, Woodinville, Redmond, Kirkland, Seattle, Bellevue, Sammamish, Issaquah, Newcastle, Mercer Island, and Lake Washington. A sidebar on the left lists "State Travel Info" and "Additional Info". A "Passes" section on the right lists "Opening of Northbound I-5 Exit to Everett's 41st Street Delayed by Weather, US 2 to Southbound I-5 Ramp to Close for Weekend". A "SR520: East end of the SR 520 Floating Bridge" section shows a live camera feed of the bridge with the text "SR 520 EAST HIGHRISE" and "© WSDOT Feb 25, 2007 10:21 AM PST".

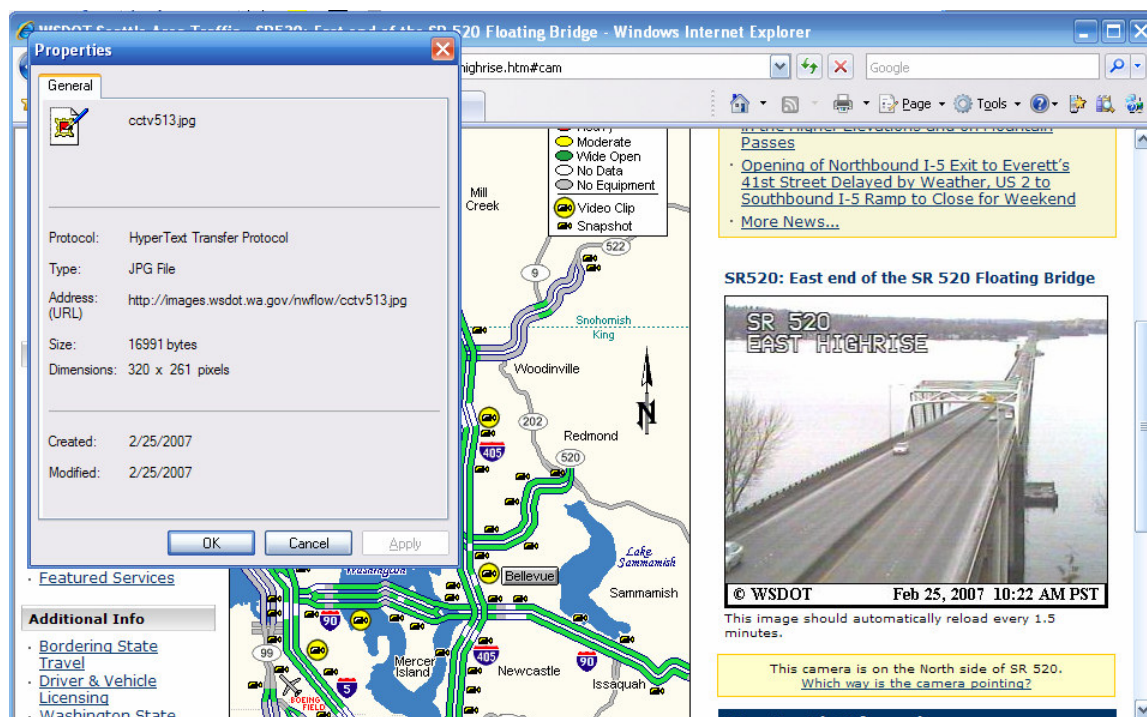
# WEATHERPANEL TRAFFIC IMAGE TUTORIAL

BY STORYR

- When you find an image you want, right-click on the image (in the browser window) and select *Properties* from the menu:



- A **Properties** dialog box will open with information about the image, including its *URL*:





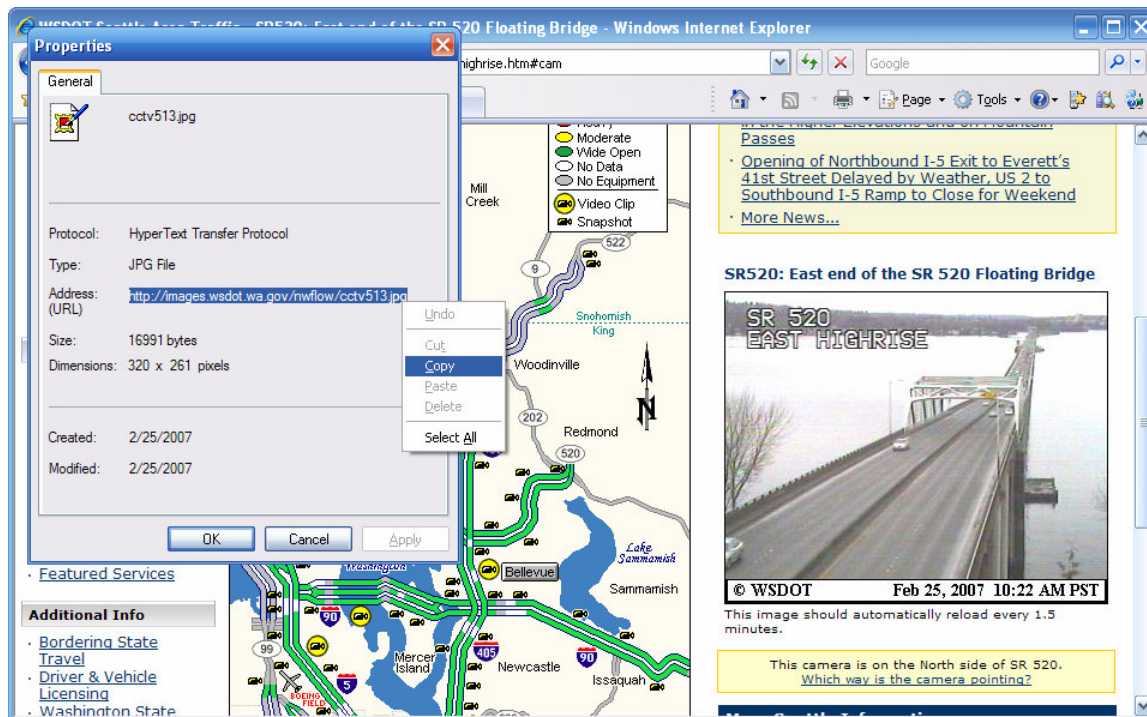
---

# WEATHERPANEL TRAFFIC IMAGE TUTORIAL

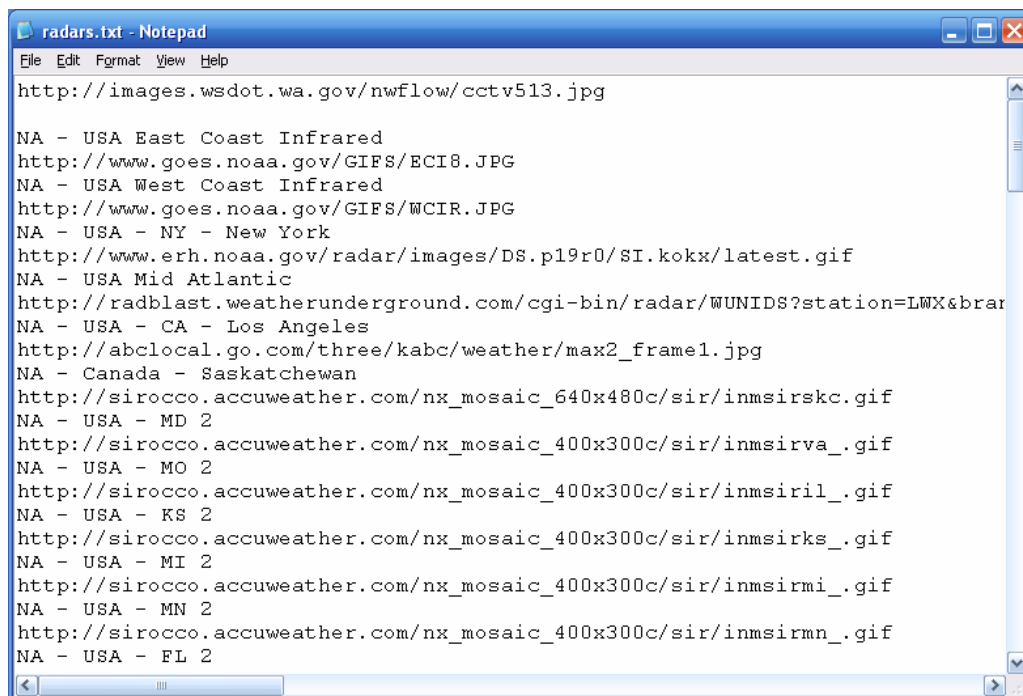
BY STORYR

---

7. In the dialog box, drag and select the contents of the URL address. Then *right-click* on the selection and choose *Copy* from the menu:



8. Now, go back to Notepad, insert a couple of blank lines and paste the URL at the top:



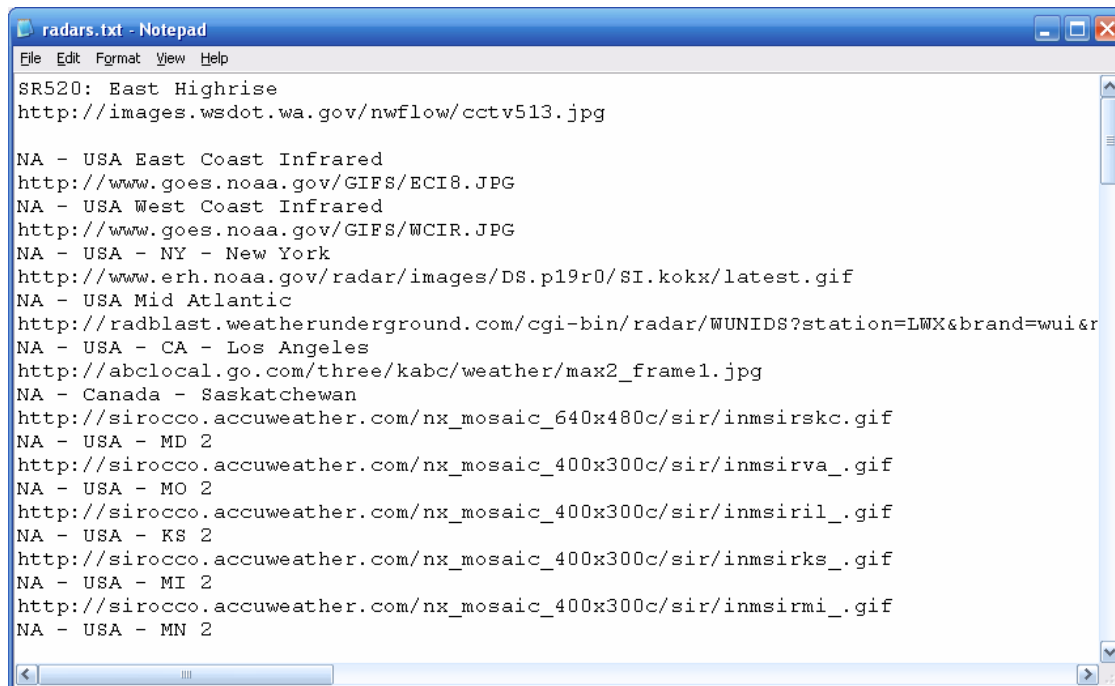
---

# WEATHERPANEL TRAFFIC IMAGE TUTORIAL

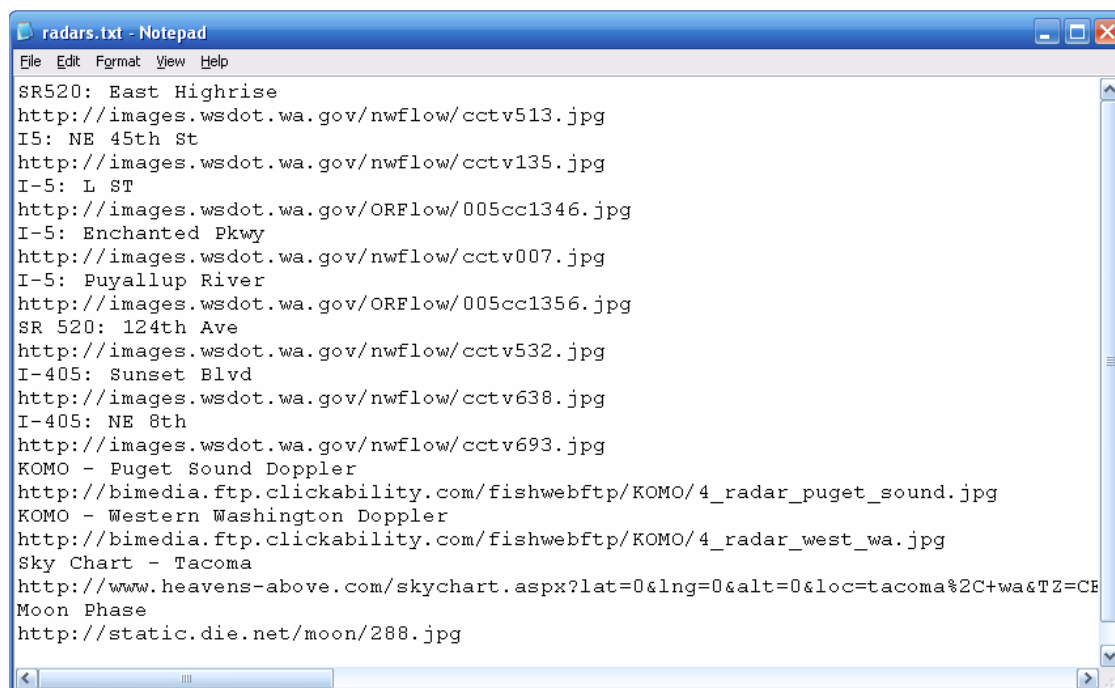
BY STORYR

---

9. In front of the URL you just pasted, type a description for it (this is the description that's displayed in WeatherPanel):



10. Continue steps 5 through 9 for each image you want. When you're done, you can delete all the other crap that was in the radars.txt file if you want:



---

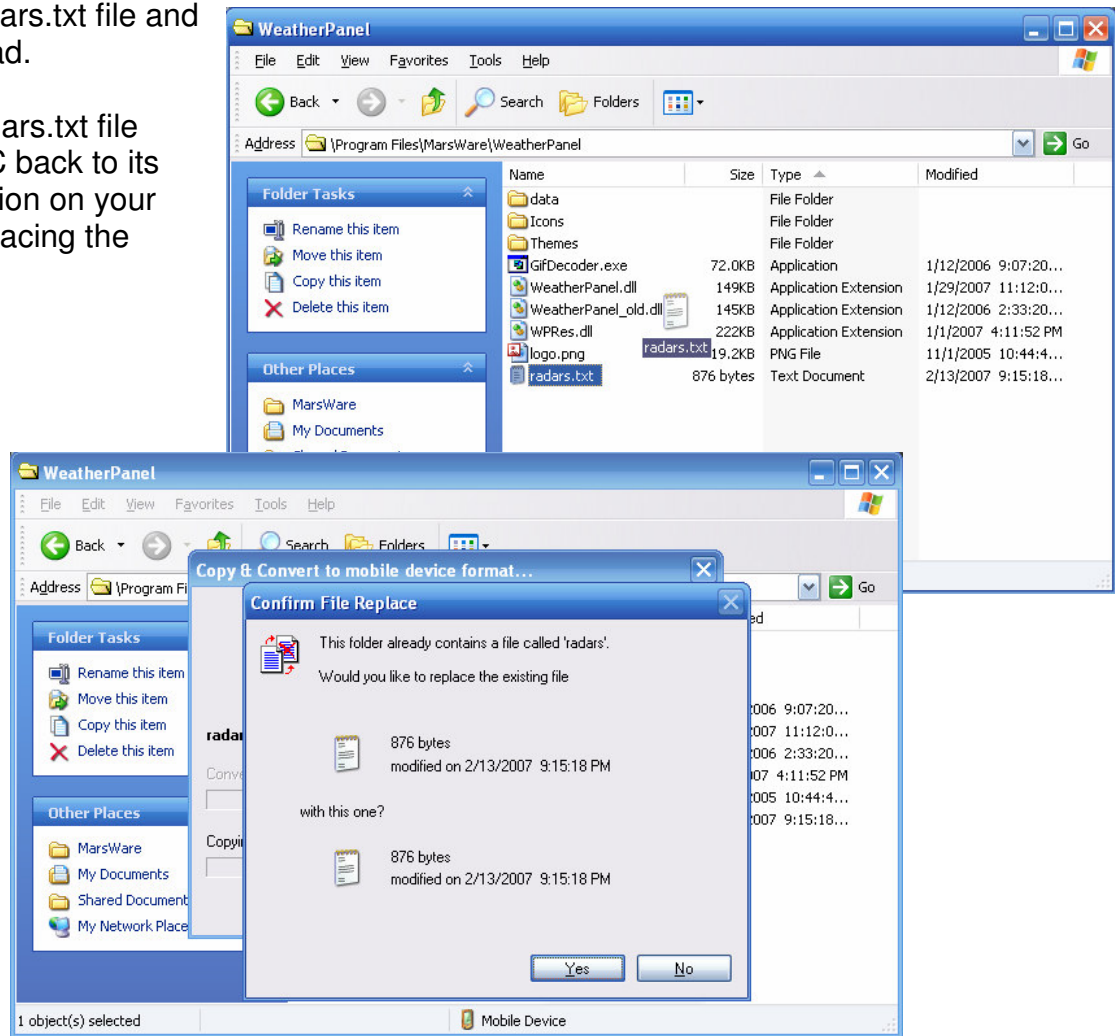
# WEATHERPANEL TRAFFIC IMAGE TUTORIAL

BY STORYR

---

11. Save the radars.txt file and close Notepad.

12. Copy the radars.txt file from your PC back to its original location on your device – replacing the original.



# WEATHERPANEL TRAFFIC IMAGE TUTORIAL

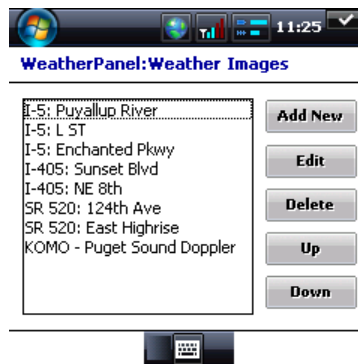
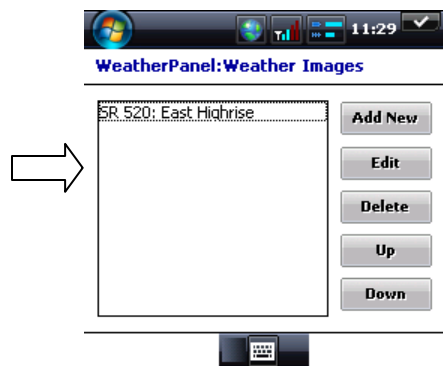
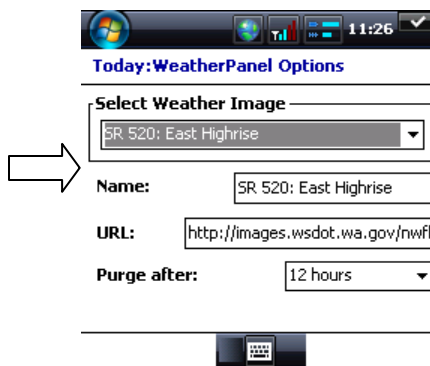
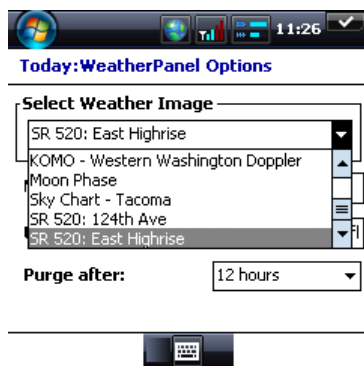
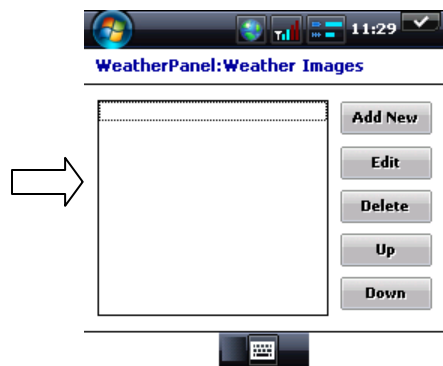
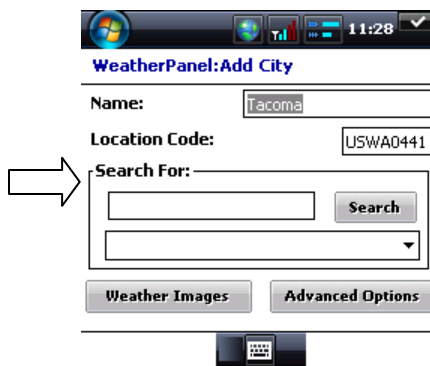
BY STORYR

13. On your device, open the **WeatherPanel** settings and select the city to add the images to.

14. Tap the *Edit* button, then tap the *Weather Images* button. On the **Weather Images** panel, add each image as follows:

- Tap *Add New*
- Select the image name (from step 9) in the *Select Weather Image* drop-down
- Tap *OK* and repeat for each image

15. Use the Up / Down buttons to order the images.



---

# **WEATHERPANEL TRAFFIC IMAGE TUTORIAL**

**BY STORYR**

---

**Done!**